

# **ALPHABET CONES**

## ***Living, Learning Tools***



Scientific Name: *Conus spurius* Gmelin, 1791



***It's Alive and Volunteering to Help!***

# LEARNING THE ALPHABET SANIBEL STYLE

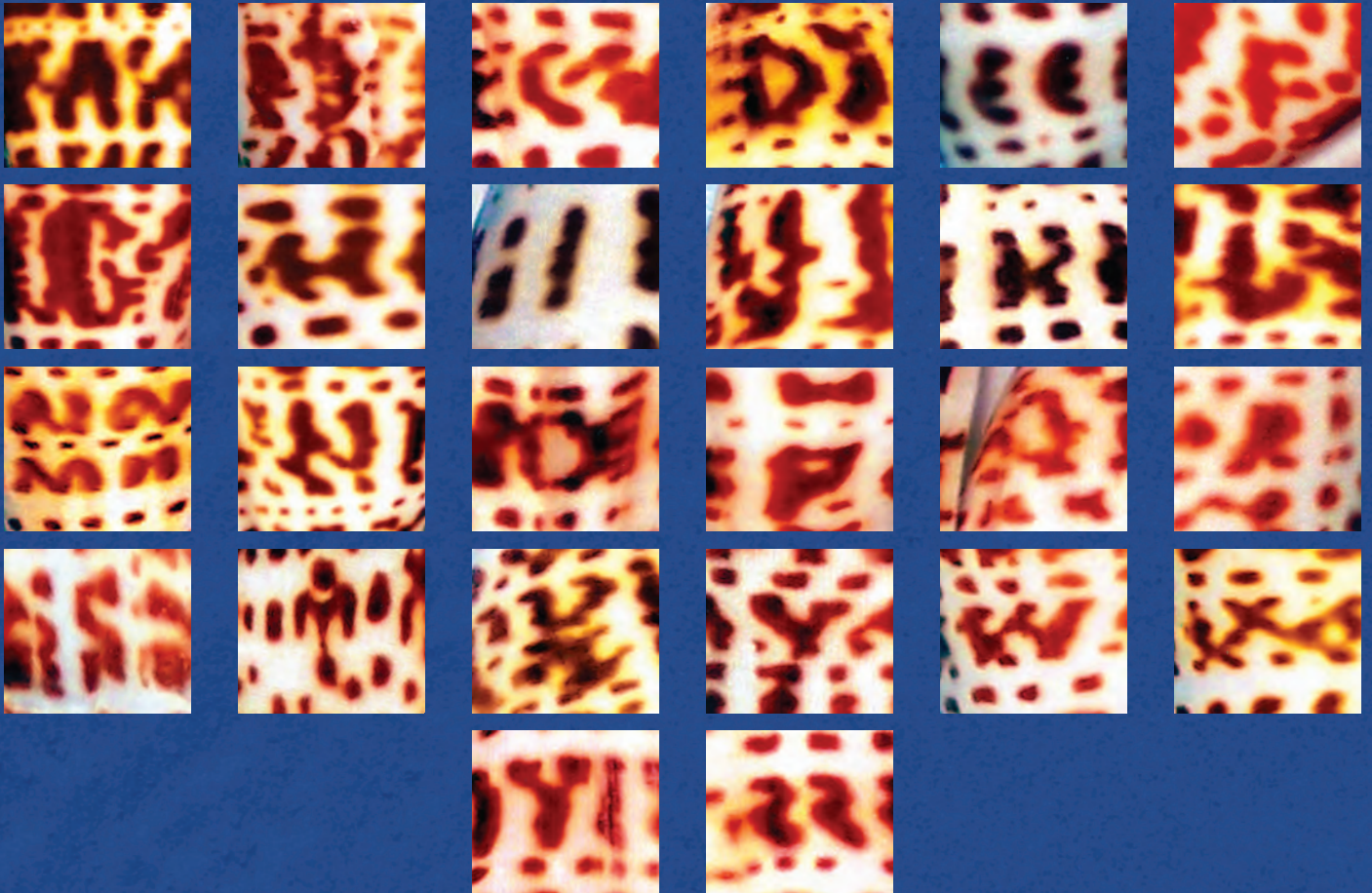
The animal typically deposits the markings on its shell in lines and blotches. Open circles or curves, such as “8”, “0”, “D”, “P”, or “9” are abnormal and difficult to find, with “B”, “Q”, and “G” being the rarest.



Shells are aligned in the same position as the letter each one displays.

*(“A” in the upper left, “G” below it, etc.)*

*Collection from  
Harlan E. Wittkopf*



Shells collected  
from the beaches of  
Sanibel Island.

# MATH AND COUNTING WITH ALPHABET CONES



1



2



3



4



5



6



7

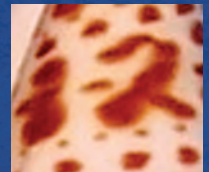
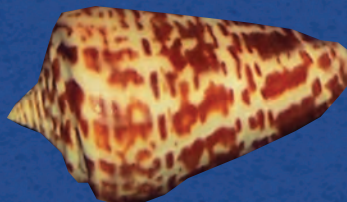


8



9

10



By adding "11" and "12" a clock face can be made to assist in telling time.

Harlan Wittkopf has been finding alphabet cones on Sanibel Island for 35 years. His collection featuring all of the letters and numbers is believed to be the first in the world.

Harlan is the author of some of Sanibel's best selling seashell books, and is co-author with the legendary Peter Dance of England. It was Peter who first had the idea to search for letters on seashells.

Harlan is a charter life member of the Bailey-Matthews Shell Museum on Sanibel, and highly recommends a visit there. His books, among many others, are available at the Museum Store.

For more information on seashells, go to the Museum's spectacular website, [www.shellmuseum.org](http://www.shellmuseum.org)



The Bailey-Matthews Shell Museum

